

MPM: Forecasting and MRP

The Forecasting and MRP module is the key to a successful implementation of your sales plans. Start your production planning process by creating forecasts for your finished goods. Forecasts can be based on historical data, weighted to your specifications, or entered manually for periods spanning more than four years.

The software will then be able to show you the raw materials and sub-assemblies that you will need to complete your plan, as well as when you will need them.

Forecasting and MRP takes the drudgery out of accurate planning

You can print MRP reports for actual work orders, for forecast items, for work orders entered but not firm, or exploded, or any combination of these, giving you the ability to do 'what-if' planning so you can better prepare to adjust production schedules to ever changing situations.

When you interface the MPM: Forecasting and MRP module to the Purchase Order application, you will be able to create purchase requisitions and more effectively manage the entire planning and purchasing phases of the manufacturing cycle. When interfaced to the Sales Order application, the MRP also shows deficiencies in finished good items, providing you with the information you need to create or update the master production schedule to meet those needs.

The screenshot shows the 'FORECASTS' window with the following data:

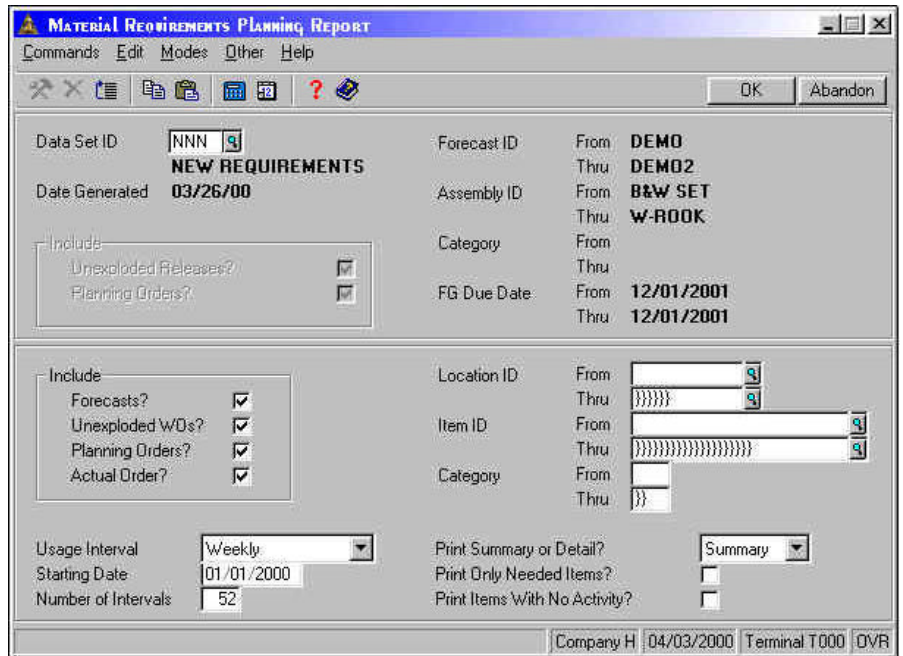
Location	Item ID	Description	Forecast Type
1	B&W SET	Chess Hardware Set	
1	BAG	Chess Hardware Bag	
2	BOX	Mahogany Box	
1	CHESS_GAME_1	Chess Game - Magnetic Board	
1	CHESS_GAME_2	Chess Game - Onyx Board	
1	ROD	STEEL - Rod - 3/4" Dia. x 12" Len.	
2	ROD	STEEL - Rod - 3/4" Dia. x 12" Len.	

Additional window details: Forecast ID: DEM02, Description: Demonstration Forecast, Usage Interval: 1 Year Def, Start Date: 01/01/2000, Copy From: Purchases, Forecast for: Purchases, Number of Intervals: 52. Entry (00001 of 00007). Buttons: Enter = Edit, Append, Change Parameters, Goto, Forecast. Footer: Company H 04/03/2000 Terminal T000 QVR.

Forecasting and MRP entry and display screens present information in a way that naturally corresponds to how you enter data and track all of your production requirements. Quick access tied to logical manufacturing procedures speed you through the planning process.

Forecasting and MRP Offers Choices and Flexibility With These Key Features

- Forecasting types are assigned to each inventory item, and can be defined with many types of weighting factors, such as past month, seasonal, and prior year.
- Forecasting can be done for both sales of finished goods and projected purchases of raw materials.
- Forecasts are defined for up to 52 time periods; they can be daily, weekly, bi-weekly, monthly, or truly user-defined to accommodate increasing time intervals as confidence decreases for extended projections.
- New forecasts can be generated from an existing forecast using the copy function.
- You can generate multiple requirements planning data sets, using different combinations of actual, forecast and phantom order data.
- MRP reporting can be presented using any time intervals; you are not restricted to time intervals used in the forecasts.
- The Order Action Report segregates your material needs to fabrication orders needed, stocked assembly orders, and required purchases.



- You can automatically create orders or update the master production schedule to include orders that fill deficiencies found by the MRP pegging report either to actual product need, or to lot size.
- If you are interfaced to the Purchase Order application, you can automatically create requisitions to the purchasing system based on the actual quantities needed, the EOQ defined for the item, Min/Max, or the least/greatest of these calculations.
- Detailed adjustments can be made to the requirements data derived from forecasts, giving you precise control over product needs and ordering.

MPM: Forecasting and MRP Reports

Order Action Report
 MRP Report
 Forecasts List
 Requirements Planning Data List



1-888-709-0062 www.3rds.com
 1258 East Moore Lake Drive NE
 Minneapolis, MN 55432

