

MPM: Bill of Material

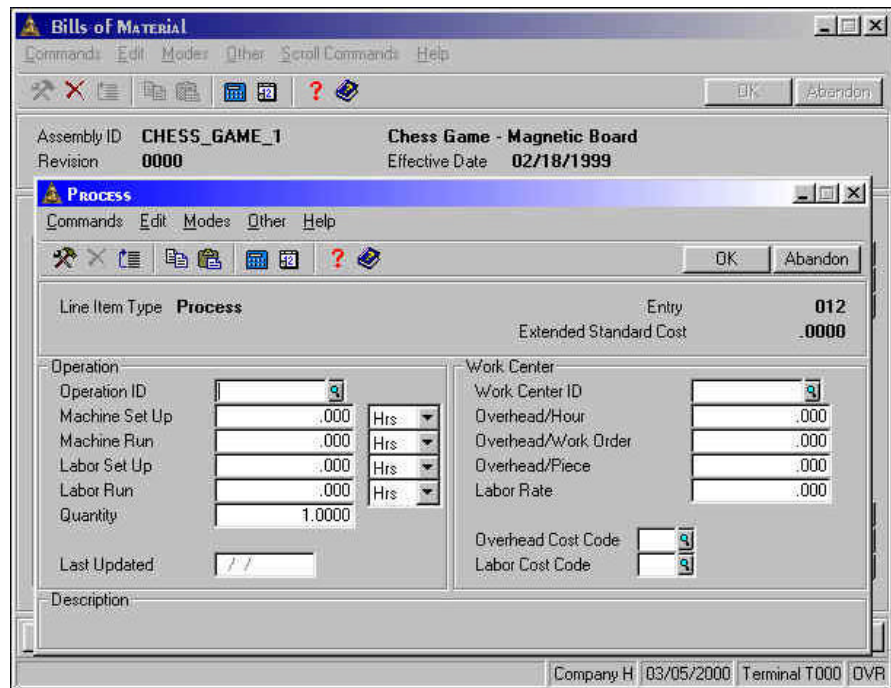
The Bill of Material module is the backbone of the Material and Production Management suite. Use this module to define your product structure, internal and external routings, and standard cost makeup.

The Bill of Material design provides almost unlimited process routing within levels of a bill, up to ten levels of structure between stocked assemblies, and both scrap and byproduct calculations.

Efficient, powerful management of product structure and routing

Audit is an important part of any software used to run your business. The Bill of Material module provides many levels of audit, from an Audit report to find nesting, missing components, and other discrepancies, to full engineering change order (ECO) control over changes to and revisions of bills of material.

For complicated tasks, there are large description areas of up to 350 characters for each assembly, component and routing step in the bill. You have the option to include or exclude that information when you print many of the bill of material reports.



The component entry screen shown above is used to enter both material components and process routing. This efficient and flexible design uses Append, Edit, Insert, Delete and Move commands to easily adjust the structure or routing for your assemblies.

With the proper access codes, you will also be able to set up new inventory items, operations and work centers from this screen, eliminating the need to interrupt data entry continuity.

Bill of Material Offers Choices and Flexibility With These Key Features

- Maintain a complete history of product structures with revision numbers and effectivity dates for assemblies.
- Your standard costs for assemblies can be assigned to any combination of over 3800 user-defined cost codes.
- You can have up to 999 combinations of material and routing components per level, up to ten levels of structure between stocked assemblies, and a virtually unlimited number of levels for finished goods.
- Material component quantities can be defined as actual product need and a scrap factor, fixed or as a percentage.
- Processes are defined with separate setup and per piece run times for machines and labor; and, times can be defined in hours, minutes, or seconds.
- Online viewing and printing of fully indented bills of material help data entry personnel visualize their progress without leaving the maintenance function.
- Routings can include external vendors to capture the cost and lead time for sub-contract work.

- Changes made to a bill of material can be required to be tracked to an ECO, or changes made will not be saved. A complete audit is available of all field changes made, and changes are identified by date, time, terminal, and login ID.
- Global component adjustments can replace or delete material items, locations, operations, work centers or vendors from all occurrences within your bills.
- The Import Materials List function provides a means to bring in components for new assemblies from customer provided files, CAD, or other software.

MPM: Bill of Material Reports

Bills of Material
 Summarized Bills of Material
 Work Center List
 Operations List
 Engineering Change Orders List
 Bills of Material Audit Report
 Costed Bills of Material
 Common-Parts Bill of Material
 Inventory Where-Used
 Work Center Where-Used
 Vendor Where-Used
 Operation Where-Used
 ECO Activity Report
 Standard Cost Variance Report
 Cost Adjustments Log
 Standard Cost Revaluation Report



1-888-709-0062 www.3rds.com
 1258 East Moore Lake Drive NE
 Minneapolis, MN 55432