

MPM: Shop Floor Control

The Shop Floor Control module extends the functionality of the Work Order Processing and Forecasting and MRP modules to include terminal based time clock functions, bar coded source documents and capacity planning functions for better control of your work center resources.

The shop schedule, work center availability, and employee schedules are all used to report and adjust your routings and/or lead times to provide the most efficient use of resources and best delivery schedules.

Have more timely and accurate cost and completion information with direct, real-time data capturing

Lot travelers and parts requisition forms can be bar coded and used as source documents for real-time system updates. The terminal based time clock provides a single entry point for the payroll and work order processing modules, avoiding the time and possible errors of entering data into two systems. Transactions can be reviewed and edited before and after posting to the payroll system to ensure proper payments.

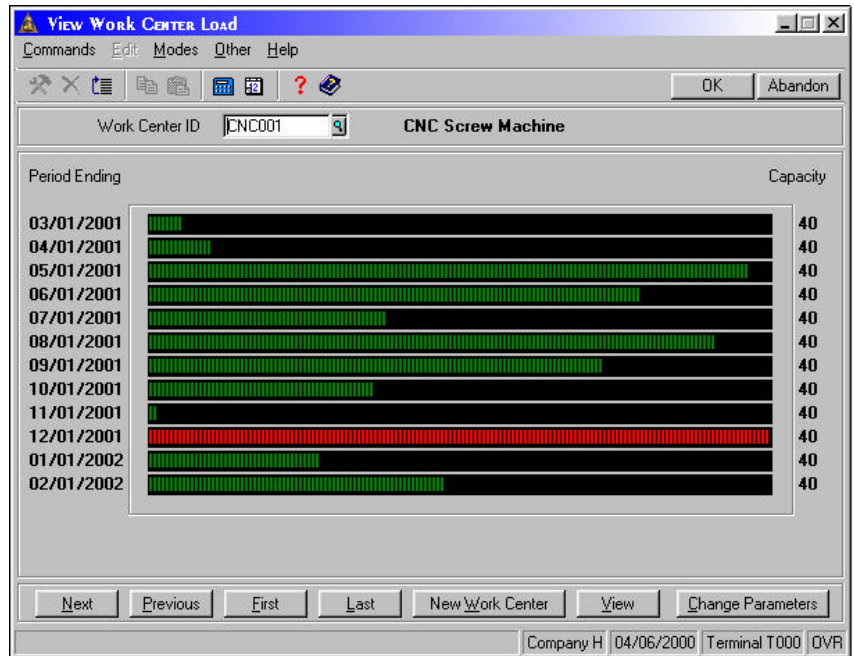
Sun	Mon	Tue	Wed	Thu	Fri	Sat	Total
00:00	00:00	00:00	00:00	00:00	00:00	00:00	00:00

The production requirements functions provide the tools necessary to analyze and adjust production to fit work center capacities. The load for each work center can be viewed graphically, showing when you are over or under capacity, and forecast data can be included to review the impact of anticipated orders.

The Capacity Requirements Planning and Reschedule reports can be used to identify bottlenecks in routing. The Work Center Scheduling function can then be used to adjust the quantities, lead time or routing of orders to meet production demands.

Shop Floor Control Offers Choices and Flexibility With These Key Features

- The Shop Schedule defines global holidays and other scheduled plan down time.
- Establish unique queue times and available hours for seven day weeks for each work center for the utmost in scheduling flexibility.
- You can setup an unlimited number of work schedules to accommodate various full and part time shifts, schedules over various days and nights during the week. These schedules include lunch and leeway times, speeding clock-in and clock-out functions and providing the basis for exception reporting.
- Employees are assigned to default schedules and home work centers to reduce data entry requirements for “standard” time entries; but overrides are always permitted for exception time entries.
- You can print employee badges, including bar codes, which can be used with card readers for data entry.
- Industry standard bar codes can be printed on the Lot Traveler and the Parts Requisition form, which are used as source documents for the cost tracking functions in Work Order Processing.



- Graphical review of work center loads provide a snapshot view of actual load compared to capacity, optionally including forecast order data.
- The Capacity Requirements Planning Report provides a detailed review of your work load summarized by user-selected time periods, with bucketless detail
- The Reschedule Report can simulate the rescheduling of work orders to fit the capacities of your work center, providing realistic completion dates for each order.
- Use the Work Center Scheduling function to review, re-route or prioritize order for a particular work center.

MPM: Shop Floor Control Reports

Time Log Report
 Daily Time Log Summary
 Capacity Requirements Planning Report
 Reschedule Report
 Shop Calendar
 Work Centers List
 Time Clock Schedule
 Bar Code Definitions List
 Employee Schedule
 Employee Badges



1-888-709-0062 www.3rds.com
 1258 East Moore Lake Drive NE
 Minneapolis, MN 55432

